

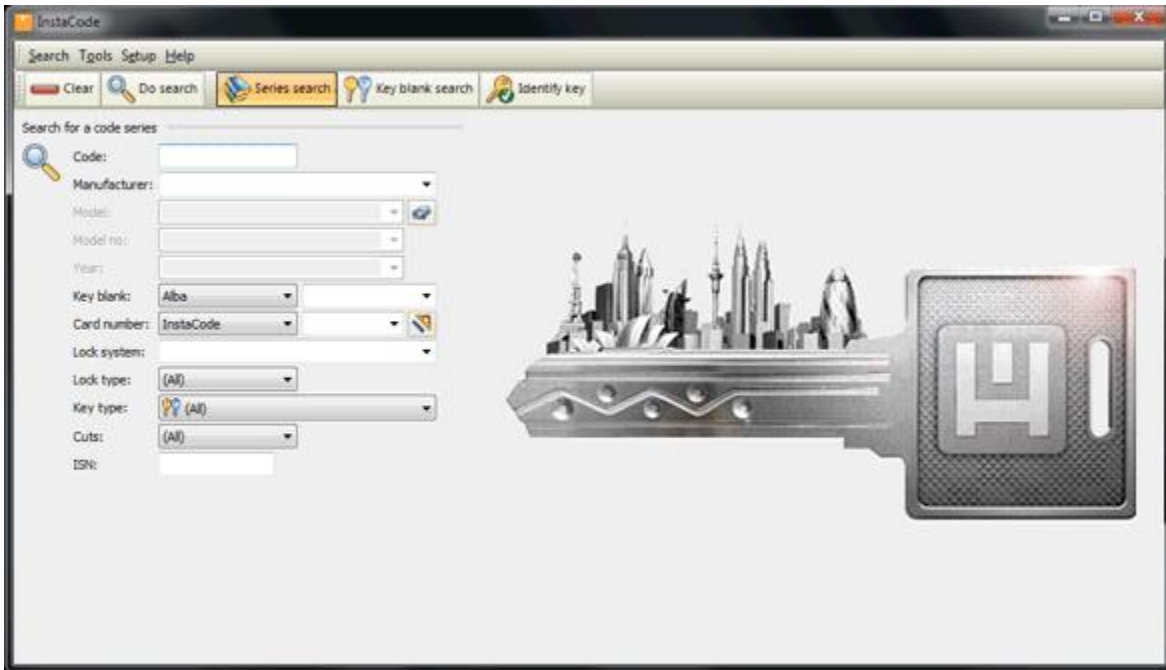
Inside InstaCode - Your Tour Starts Here

Lets take a walk through some of InstaCode's functionality. We will show you firstly the standard features within InstaCode, then follow with the added features InstaCode offers you!

InstaCode's opening view allows you to search for any combination of key code, manufacturer, model and year, key blank, card number or lock type.

The selections for manufacturer, model and key blank are great - as you type in the first few characters they find and display the nearest matching entry, so you don't need to know how to spell some of those complex manufacturer names or do lots of typing.

We're going to look for the Toyota code 12345, but for now lets put in just the code 12345 and leave the other search fields blank.



Here's the results. As you can see, there are quite a few code series that contain the code 12345. We've moved the highlight down to the Toyota series that we are looking for, but rather than opening this series, lets go back to the search screen and try a better search.

InstaCode

Search Favorites Tools Setup Help

Back Details Series search Key blank search Identify key

Matching series (278/398) Code: 12345

Type	Series	Manufacturer	IC Card	Cuts	ISN	Lock system	Notes
Bit	(.....) 12345 (MM)	ASSA	3237	5	6539		
Bit	(.....) 1234567	Union	3227	5	6529		
Bit	(.....) 123456789AB	Siss	3223	5	6525		
Bit	(.....) 7654321 (40C7-6/12)	Lasbolaget	3207	5	6509		
Bit	(.....) 7654321 (40C7-6/12)	Lasbolaget	3208	5	6510		
General	000000-210080	GECE	666	5	142		
Bit	00001-55555	Santos	3255	7	6630		S Lever
		Sylvan					
General	001001-163000	MG	1262	5-5-5	6659	MG HS	
Combination	010101-041017	Abus			1598		
General	012345	Beram	539	5	3610		
		Royal					
		Viro					
General	012345	Beram	661	5	5889		
		Royal					
		Viro					
General	012345	Beram	662	5	5892		
		Royal					
		Viro					
General	012345	Wielka	740	5	6425		
Vehicle	0123456	Beram	700	5	1262		
		Royal					
		Viro					
General	0123456	Burg	953	5	4373		Large Pin

Key blanks
Asso
MB-MU-MM-3LEVER

OK, lets try searching by code 12345 and manufacturer Toyota.

InstaCode

Search Tools Setup Help

Clear Do search Series search Key blank search Identify key

Search for a code series

Code: 12345

Manufacturer: toyota

Model: [dropdown]

Model no: [dropdown]

Year: [dropdown]

Key blank: Alba

Card number: InstaCode


Lock system: [dropdown]

Lock type: (All)

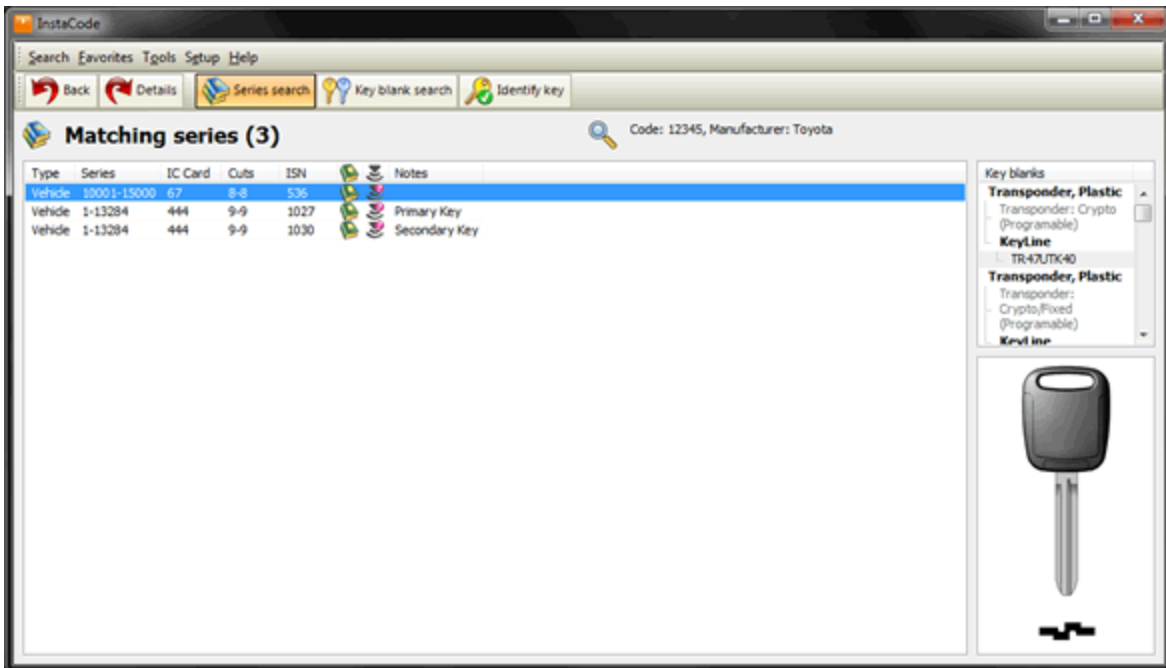
Key type: (All)

Cuts: (All)

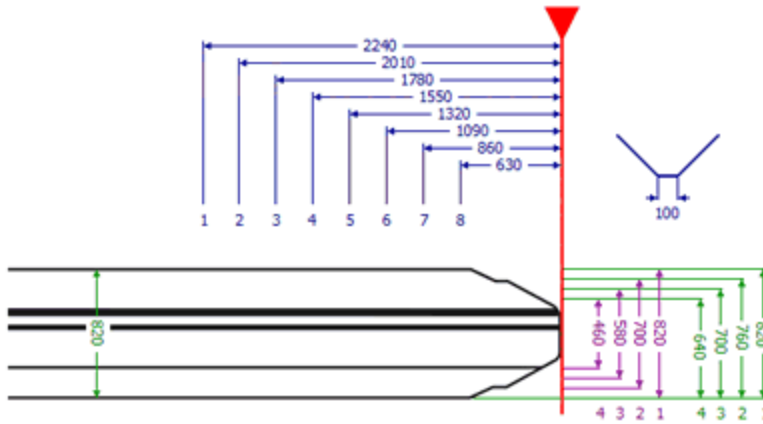
ISN: [input]



And here are the results... As you can see, it's much less to look at!



Before we open this series, let's see what it looks like if you were to print the whole series. **Note:** We've only shown the top part of the printout here - not the whole thing.



Key blanks

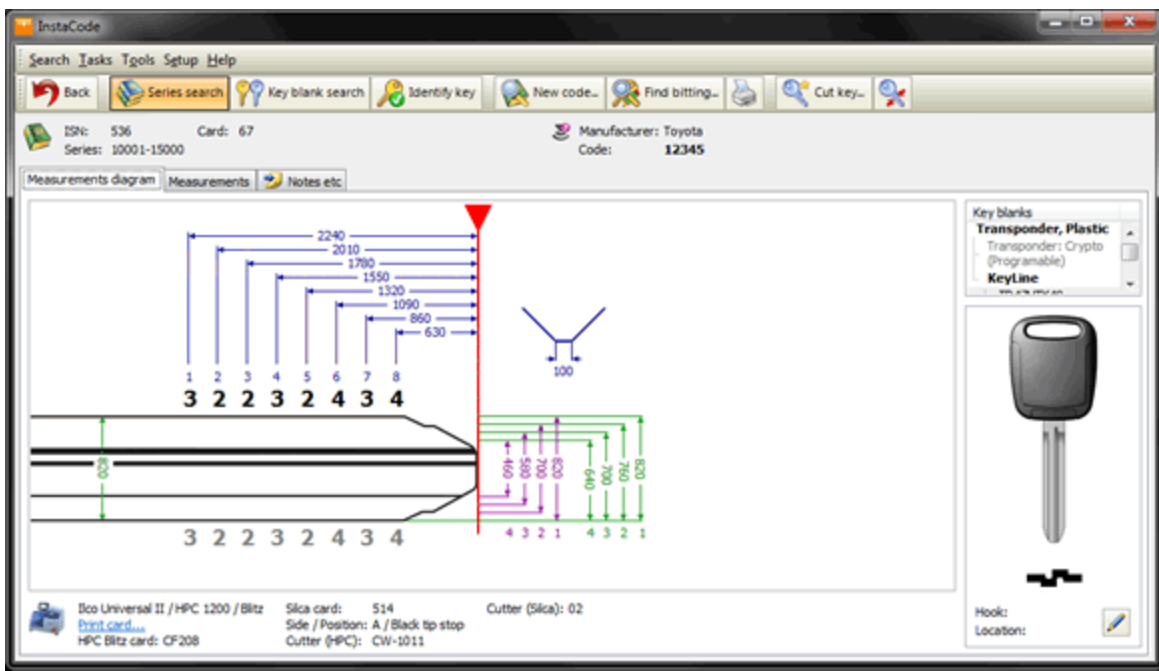
Nash: N150
Anis: N150P
Borkey: 1623, 162300T10, 162300T30, 1623P987
Canas: TOY2, TOY2P

Machine data

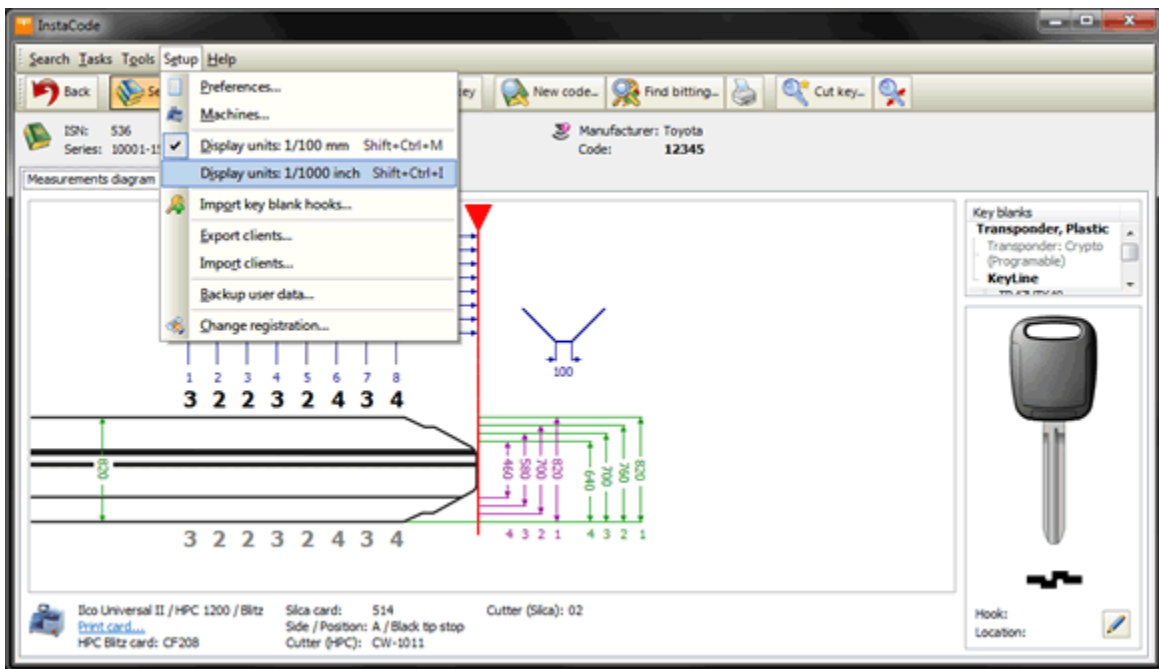
Silca card: 514, HPC Blitz card: CF208

Code	Bitting	Code	Bitting	Code	Bitting	Code	Bitting	Code	Bitting	Code	Bitting
10001	22343342	10002	33443324	10003	22244321	10004	21131221	10005	23443431	10006	32311121
10007	31312221	10008	32212421	10009	32131221	10010	12343231	10011	32231121	10012	11223121
10013	23212231	10014	11242221	10015	22213321	10016	23343134	10017	23343442	10018	32342434
10019	23212342	10020	21134223	10021	22431121	10022	34324434	10023	32343431	10024	24311221
10025	22312321	10026	22112331	10027	13111242	10028	33321321	10029	23313443	10030	23343431
10031	23444331	10032	34433342	10033	34234432	10034	23312221	10035	22112324	10036	12313434
10037	33112221	10038	21323311	10039	34344324	10040	32443431	10041	24231221	10042	32343342
10043	11234224	10044	23343324	10045	33424332	10046	33344342	10047	24443324	10048	22213121
10049	33343442	10050	34343431	10051	11231243	10052	23224211	10053	22132124	10054	34443331
10055	24211121	10056	22133434	10057	32122433	10058	34443231	10059	33343311	10060	12431324
10061	33423221	10062	13323324	10063	32344431	10064	11213234	10065	23112221	10066	32132434
10067	33443134	10068	33113442	10069	32342221	10070	21343111	10071	34324334	10072	22131342
10073	23323121	10074	33344211	10075	22431242	10076	34244431	10077	32343213	10078	34213224
10079	22242134	10080	13232432	10081	22121213	10082	33231211	10083	12212342	10084	31342131
10085	23312434	10086	13212424	10087	22431221	10088	32112432	10089	23131221	10090	11323313
10091	12122213	10092	34343231	10093	34431131	10094	31132431	10095	22132342	10096	33423431
10097	13212212	10098	22132323	10099	12343431	10100	33213434	10101	24213221	10102	33442221
10103	33132221	10104	23232134	10105	23421332	10106	21242421	10107	24312221	10108	33243213
10109	33322421	10110	23424421	10111	23423331	10112	22421231	10113	13343443	10114	23212124
10115	24342242	10116	22112231	10117	13343222	10118	22231243	10119	32134344	10120	24312324
10121	22342243	10122	32223231	10123	33133242	10124	33342124	10125	32242443	10126	13324434
10127	31211221	10128	12331121	10129	32112434	10130	23342133	10131	34422121	10132	24443423
10133	33311121	10134	22213311	10135	33422443	10136	24431213	10137	33224321	10138	21133234
10139	11224321	10140	24443433	10141	32244343	10142	23424321	10143	33344431	10144	24221211

OK, back to the results screen, and we'll open the Toyota series on code 12345. Look at all that information. An improved graphical layout of the spaces, depths, alignment, machine information (more on this later), notes, key blanks, key blank profile picture.

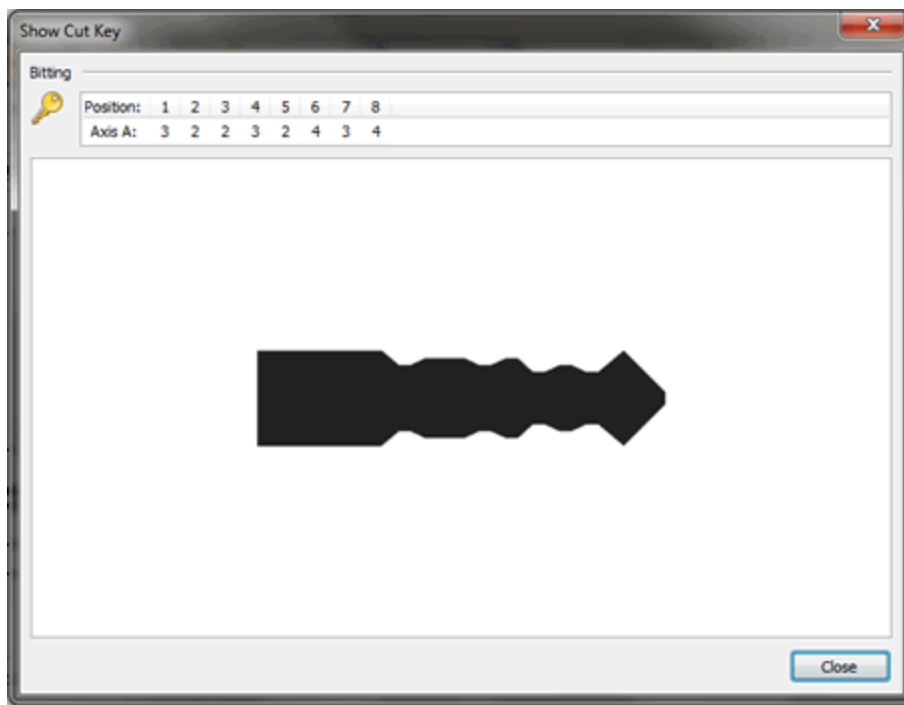


Want to see that in inches instead of mm? - no problem, simply change your preferences in the Setup menu item from the top menu bar.



What if I want to cut this code on a manual machine, but the machine is not next to my computer? No problem. Click "Print" on this screen and you get all the information that you need to cut this code, on a single sheet of paper.

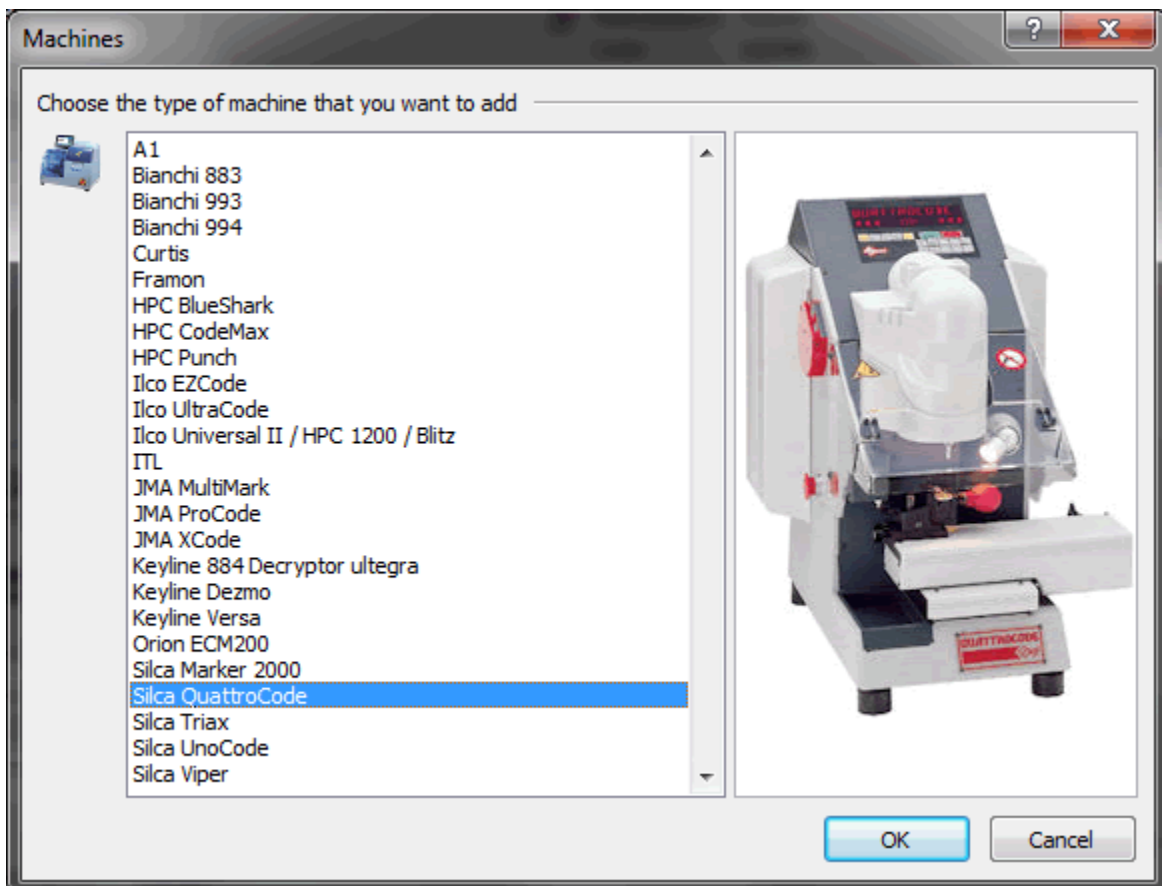
Just to make sure that the key looks right after we have cut it, let's select "Show Cut Key" from the "Tasks" menu and get a picture of how the cut key should look.



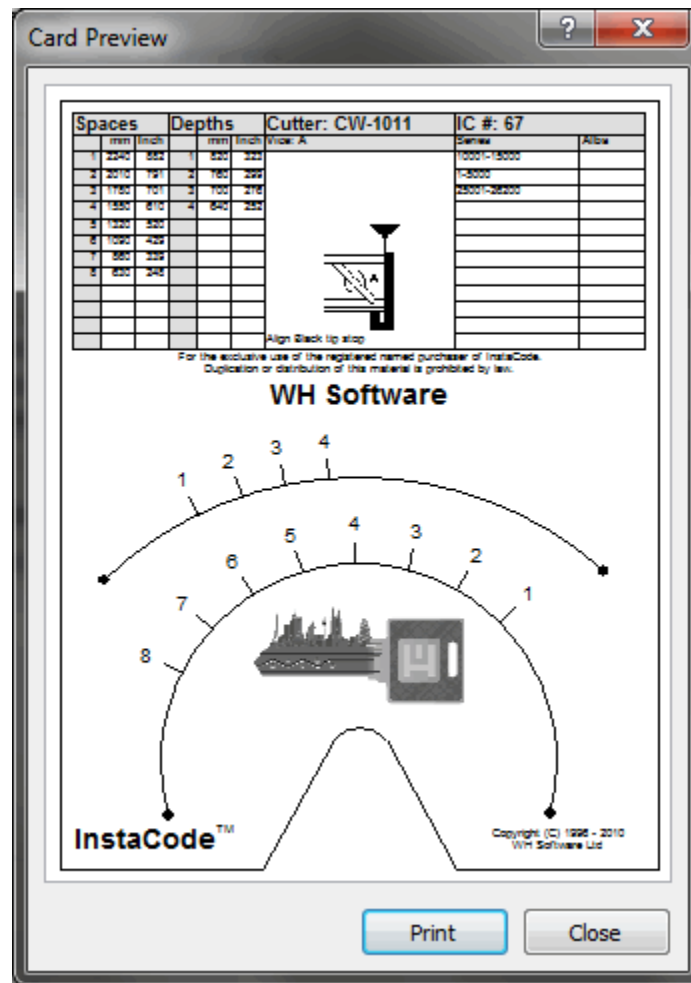
A little earlier, we promised that there would be more to come on machines. Here it is...

Support for the widest range of both electronic and manual machines available in any code program.

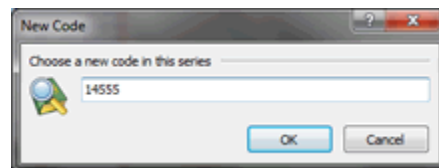
Yes, InstaCode communicates with all the manual and electronic key machines shown below.



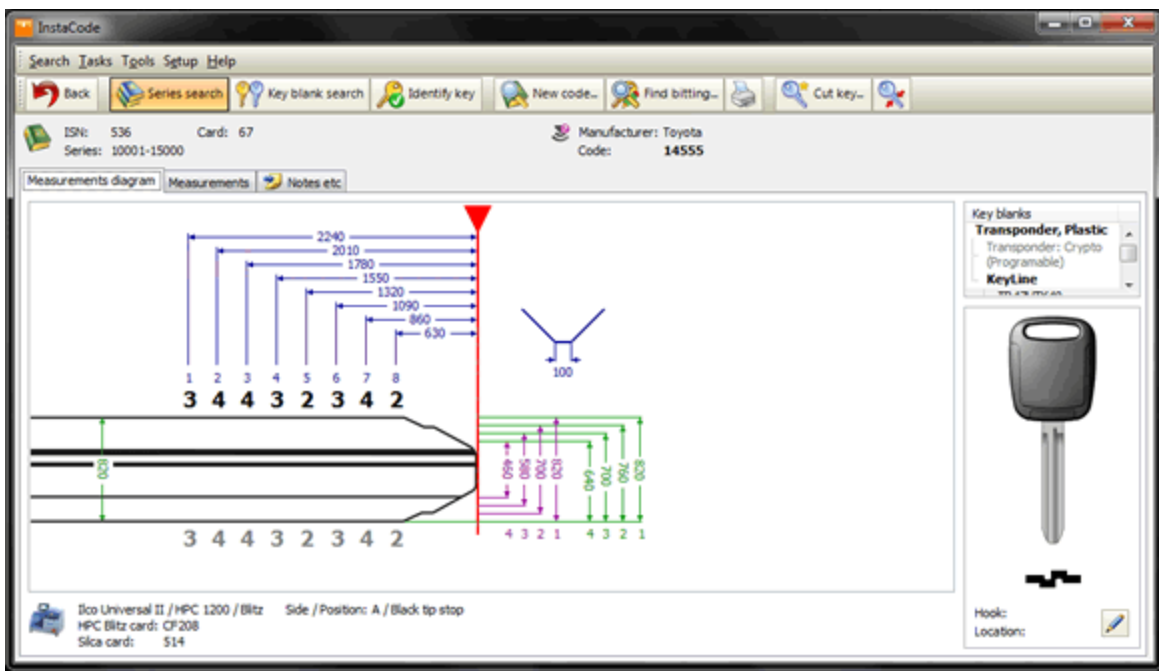
Need a card for an Iico Universal II, HPC 1200, Blitz or Punch machine - then print it. Here's the card for both the Iico Universal II and the HPC 1200.



Suppose that you need a different code in the same series. Go ahead and click the "New Code" button and up comes a window for you to enter the new code. We'll choose 14555 for this example.



And here it is, complete with new code and new bitting.



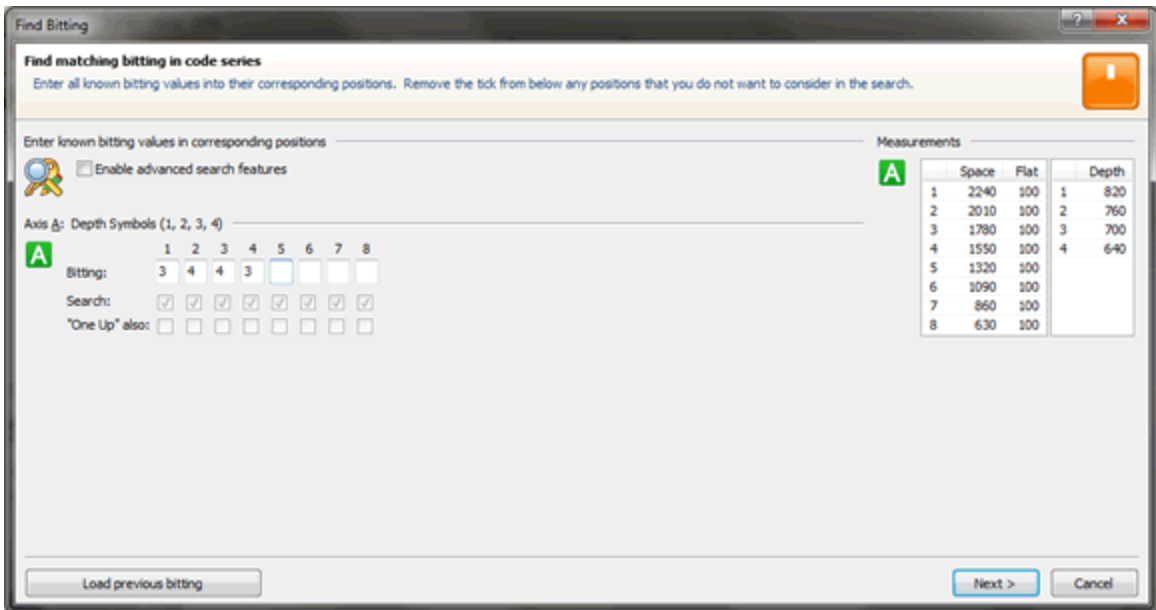
What do I do if the customer brings in just part of the key, or you've decoded part of the bitting for a car door lock, or you simply want the code from a bitting that you are entering?

No problem.

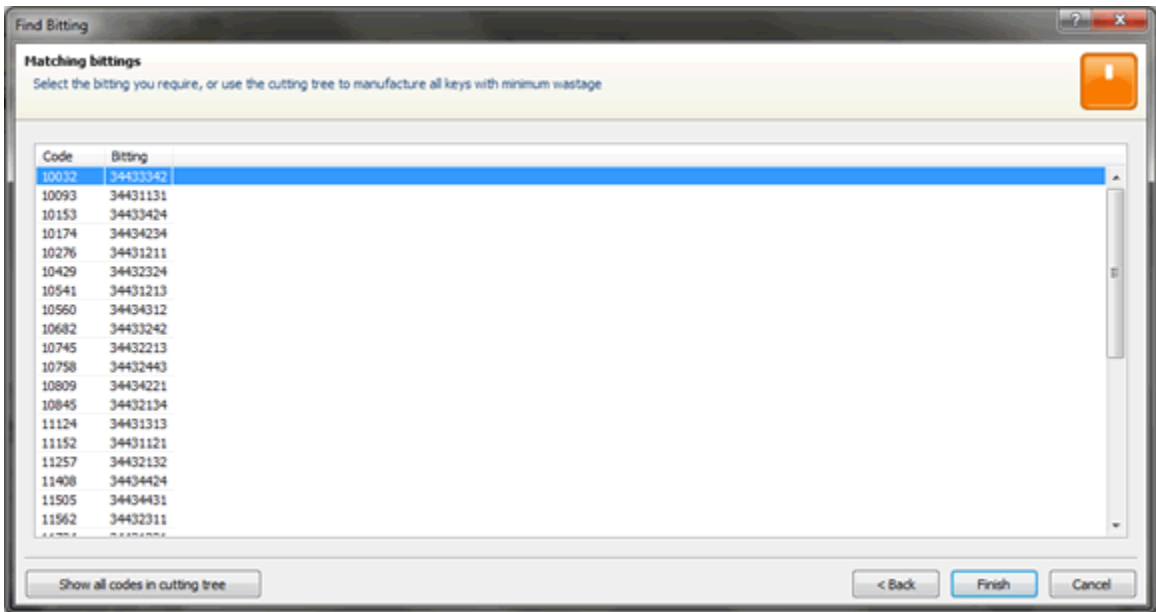
Let's look at partial cuts. Click the "Find Bitting" button



Type in the bittings that you can read off the damaged key...



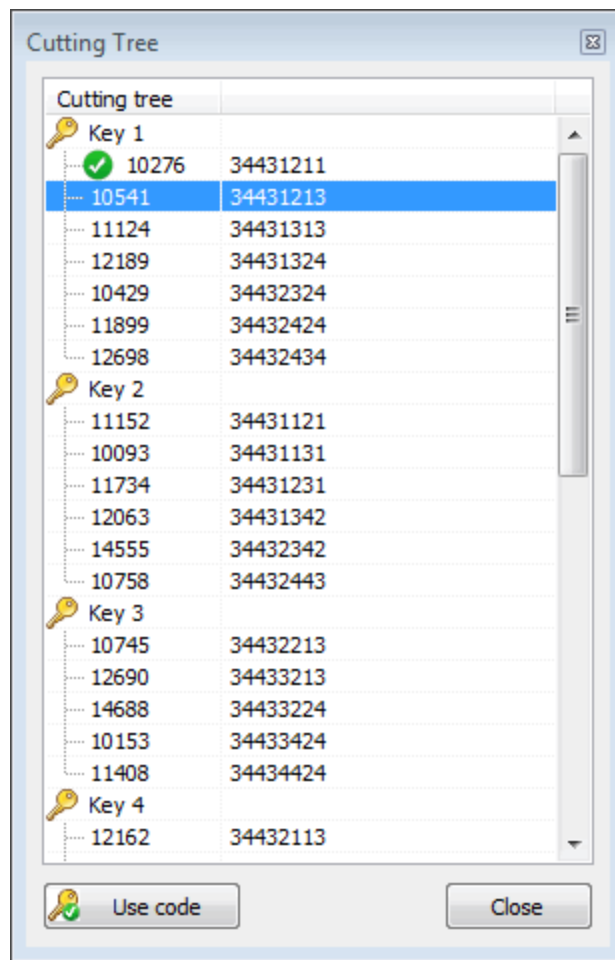
Choose "Find" and up come all the possible results.



Now that's a lot of keys to cut, so lets get InstaCode to help us.

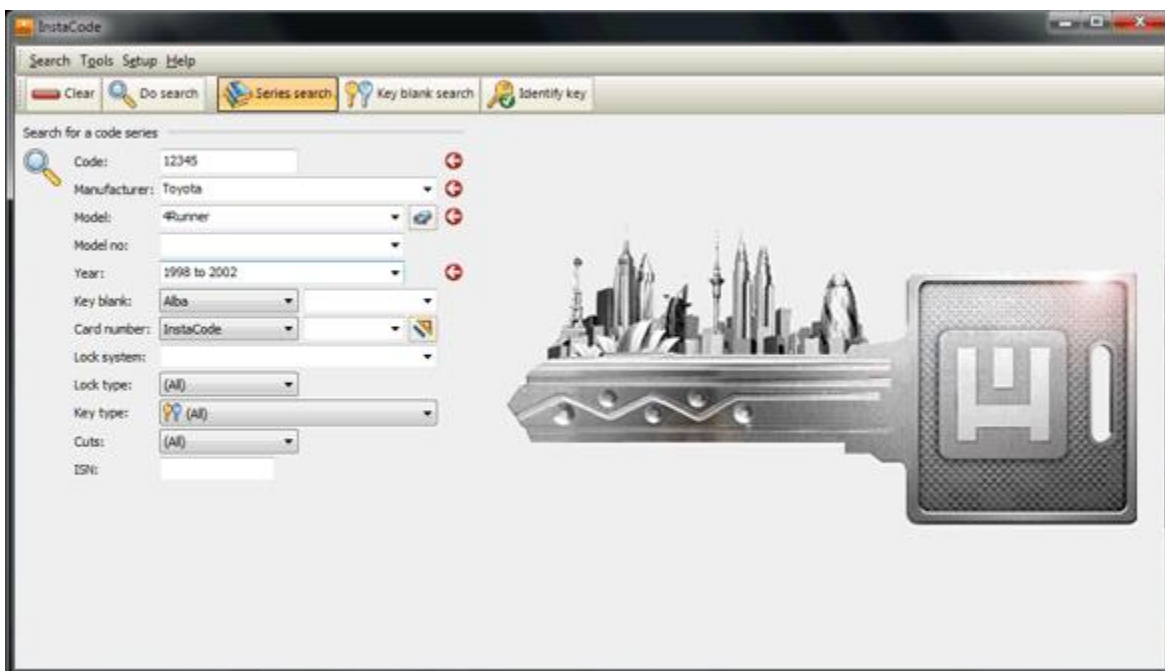
Click on the "Cutting Tree" button and InstaCode will show you how to recut multiple codes onto the same key blank so you can test each one and use a minimum number of key blanks. Much less wastage.

Want to see the cutting tree on a sheet of paper so you can take it with you? Easy, just click the "Tasks" menu item from the top menu bar, then "Print".

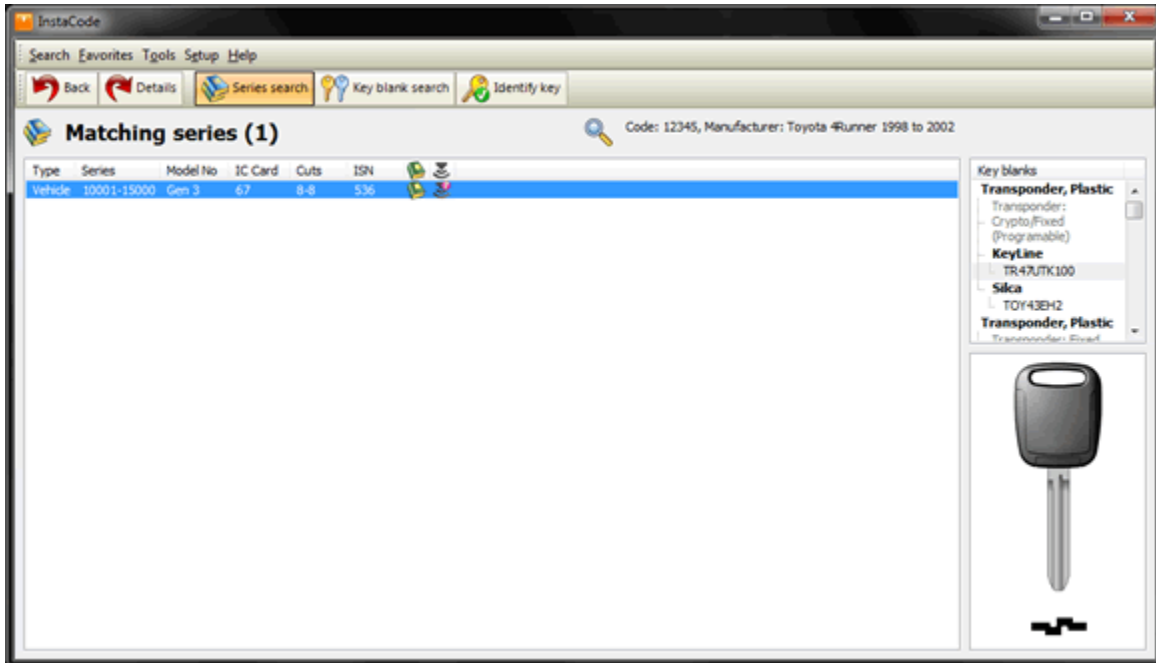


Other features in InstaCode

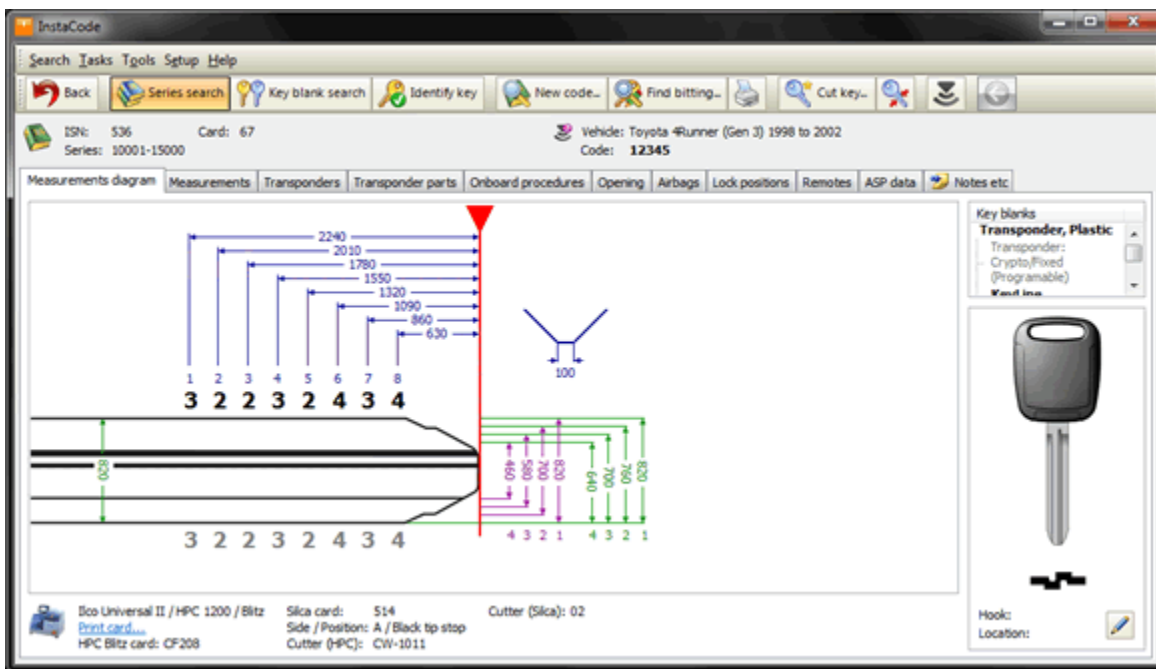
To access the other features in InstaCode - transponder programming instructions, the ASP data, car opening instructions, airbag safely, lock wafer positions we need to search using the information we have available to us (manufacturer, model and year of vehicle in this example). We will enter the code 12345, with the manufacturer Toyota, model 4 Runner, and year 1998 to 2002.



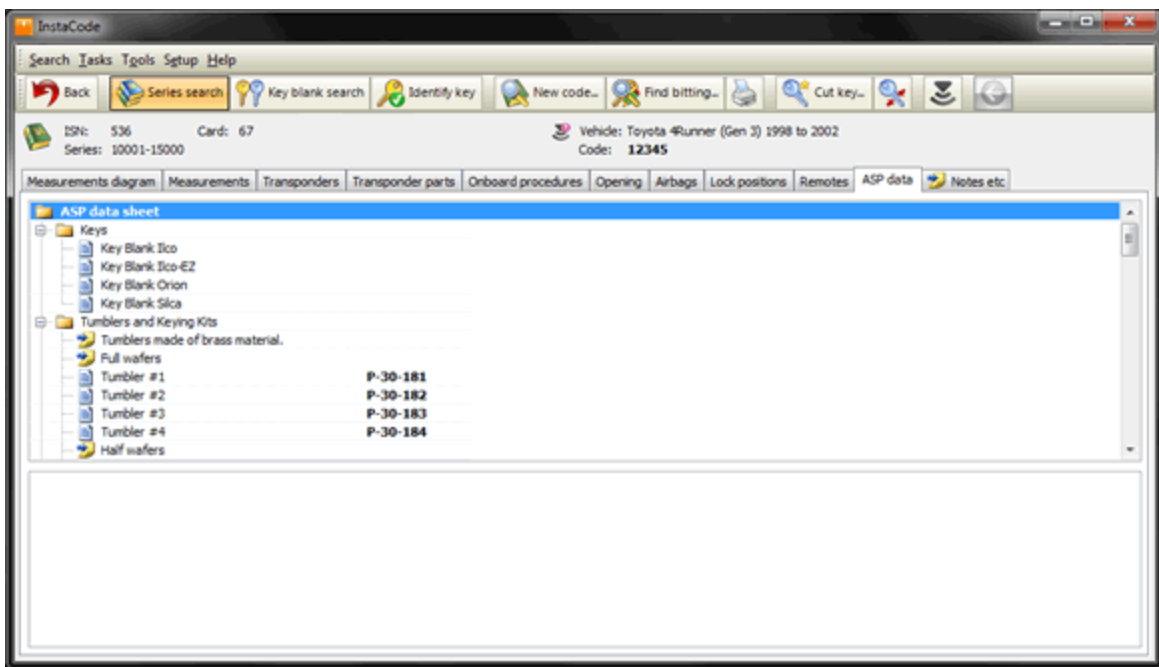
And here are the results... As you can see, only one series is relevant for the search criteria entered!



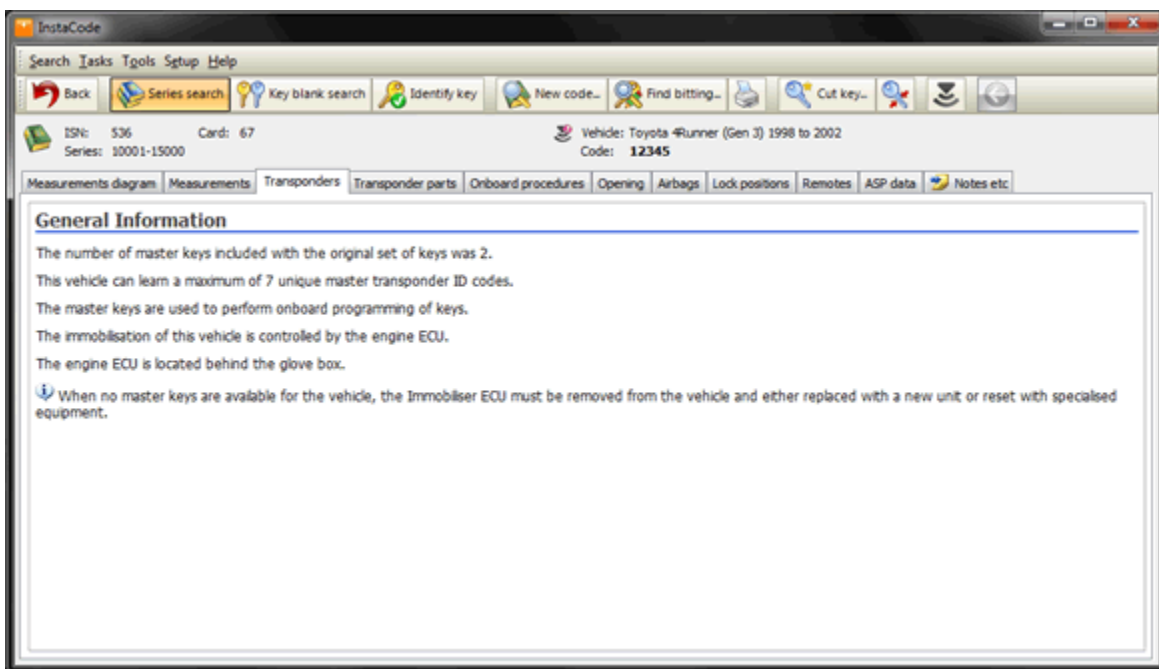
Now on opening this Toyota series. Look at all that information. An improved graphical layout of the spaces, depths, alignment, machine information, notes, key blanks, key blank profile picture. You will also see the buttons to access transponder programming instructions, opening instructions, ASP data and Notes. We will show you each feature now.



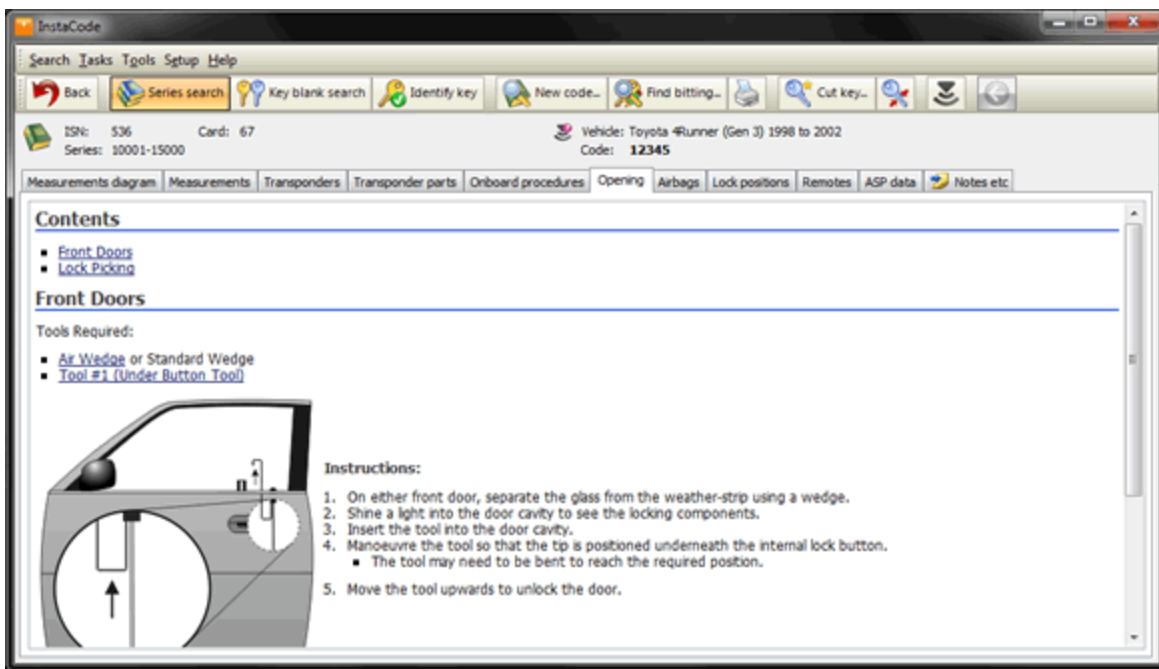
We will select the "ASP data" tab - this displays the relevant locks on the vehicle, but pressing the + it will expand the tree to see the products within that tree. We have highlighted an ignition lock C-30-409, which shows a picture of what the lock looks like for easy identification.



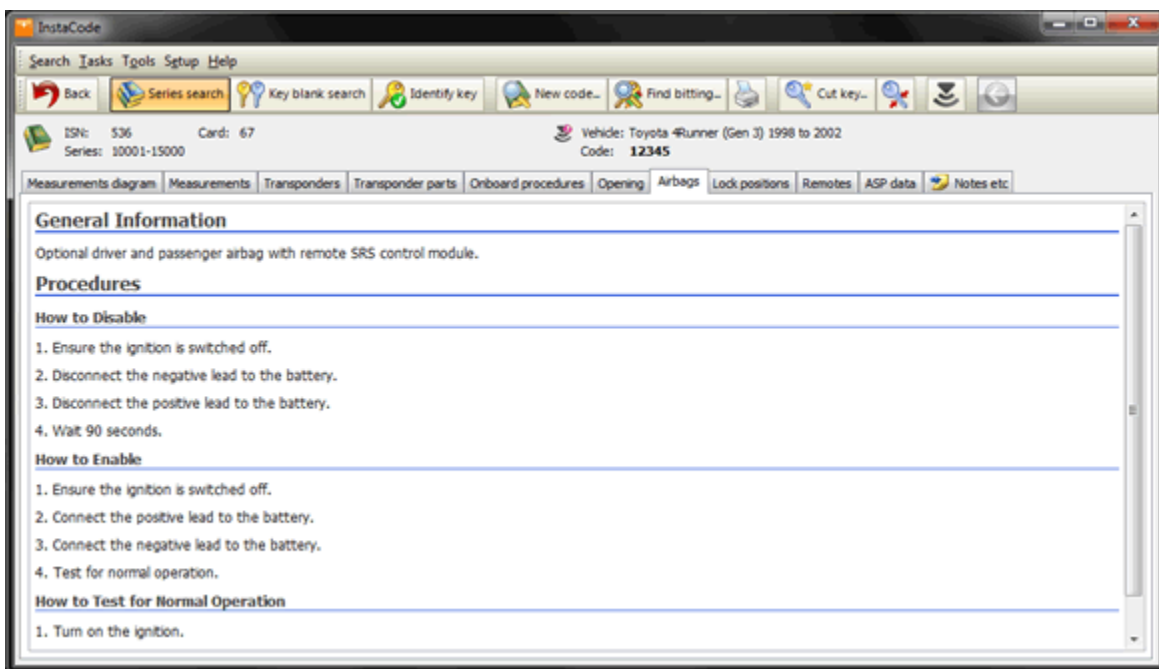
Next, we select the "Transponders" tab - this gives step by step instructions on key duplication and in-car programming that is required for this particular vehicle.



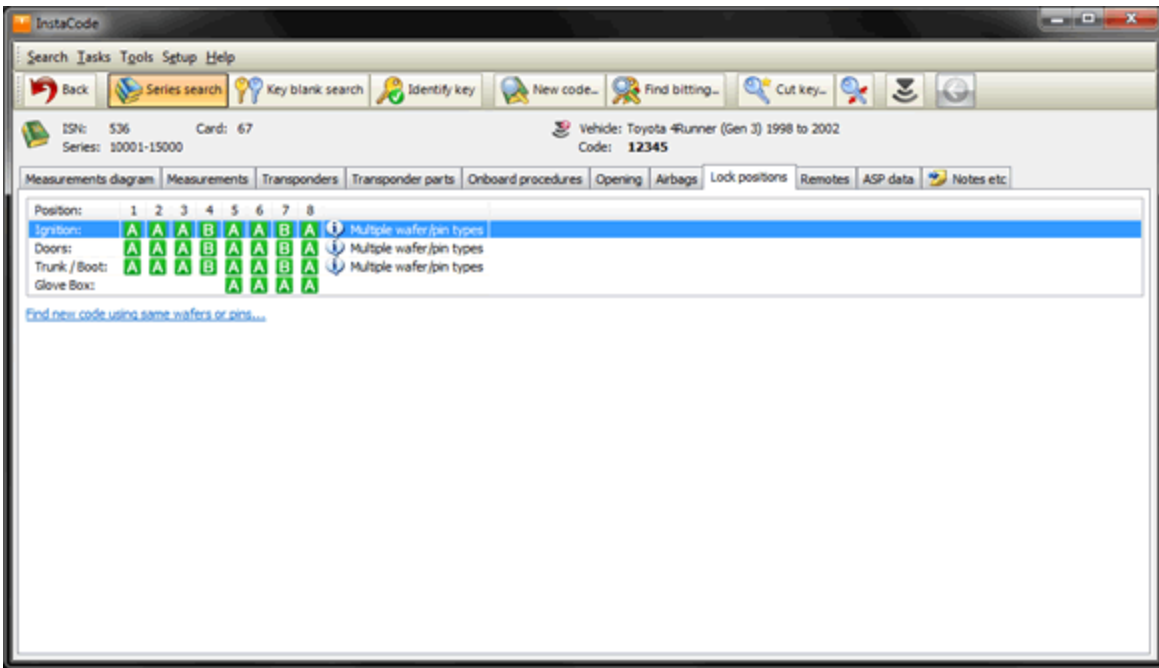
Opening Instructions is the next option. This shows you the picking method required, along with entry methods to take, the tools required to do so and also displays a range of car opening tools used.



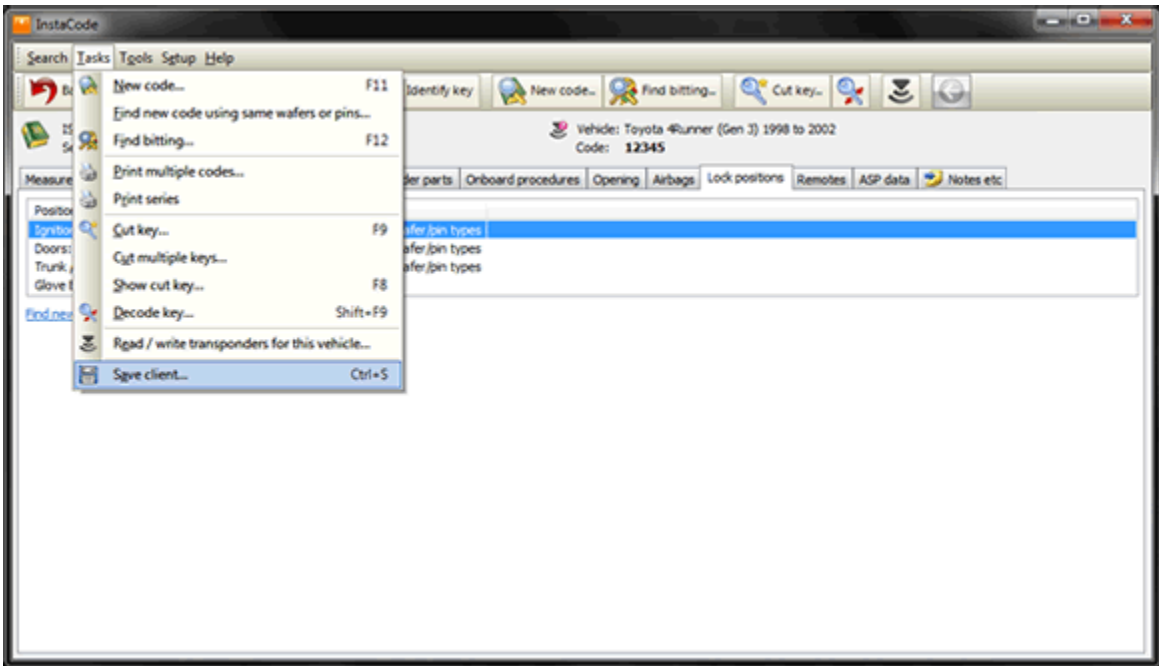
The Notes button contains such information as Air Bag information and Lock Wafer Positions. Air Bag Information details how to enable or disable air bags.



Lock Wafer Locations displays just that...



Last thing for this peek at InstaCode, click on the "Save Client Info" button and record your customer's information so that next time they come in you can make a replacement key.



Save Client Information

ISN: 536 Code: 12345
Series: 10001-15000
Manufacturer: Toyota 4Runner (Gen 3) 1998 to 2002

Client Notes Transponders

Client Details

Name: Phone:
Address: Mobile phone:
 Email:
 Password:

Vehicle Information

Make: Licence plate:
Model: VIN:
Year: Colour:

Copy from another client... OK Cancel